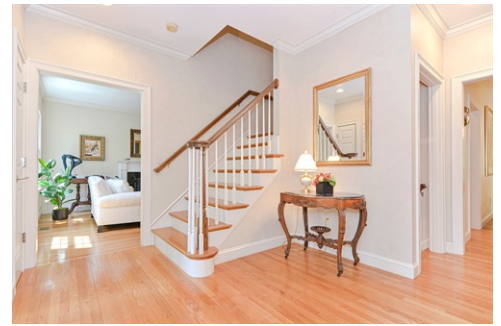




\$ 2,295,000



19 Brookdale Ave., Wellesley, MA 02482

- » Beds: 4 | Baths: 3 Full, 1 Half
- » MLS #: 73118323
- » Single Family | 3 ft² | Lot: 14,095 ft²
- » More Info: 19Brookdale.IsForSale.com



Kathy Kelley
 (781) 710-1035 (Direct)
 (781) 237-8787 (Office)
kathy@BHHSbaystatehomes.com
<http://wellesleyfinehomes.com>

**BERKSHIRE
 HATHAWAY**
 HOMESERVICES
 TOWN AND COUNTRY
 REAL ESTATE

Berkshire Hathaway HomeServices
 310 Washington Street
 Wellesley, MA 02481
 (781) 237-8787

Remarks

Your wait is over! Stunning young colonial sited on a peaceful cul de sac. Entry hall with tall ceilings, elegant dining room and fireplaced living room. The high-end kitchen features wine cooler, Wolf range, warming drawer, spacious seating area and opens to the beautiful 24' cathedral ceiling family room with custom built-ins and gas fireplace. The piece de resistance is the glorious four-season conservatory/sunroom: a tranquil year-round retreat with wall-to-wall windows, board and batten cathedral ceiling and built-ins. The first-floor office may easily be converted to an additional 5th bedroom thanks to the adjacent full bath. Upstairs you will find four bedrooms including the primary with two huge walk-in closets and a spa-like bath with tub, double sinks, and spacious shower. The lower level includes a massive media room, gym area, large mudroom, and custom wine cellar. Beautifully maintained and 2023 roof. All this on quiet cul de sac yet with easy access to major routes.

